

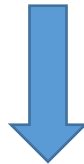
Citrix App and Desktop Virtualization Certification

1Y0-401 Exam



- Vendor: Citrix
- Exam Code: 1Y0-401
- Exam Name: Designing Citrix XenDesktop 7.6 Solutions

Get Complete Version Exam 1Y0-401 Dumps with VCE and PDF Here



<https://www.passleader.com/1y0-401.html>

QUESTION 1

Users must be able to connect remotely from their own mobile devices. What should the architect consider to increase the security of the current authentication solution?

- A. Adding a second authentication factor
- B. Placing domain controllers in the DMZ for remote users
- C. Shortening the Active Directory password expiration period
- D. Populating the RDS user profile path in the Active Directory user accounts

Answer: A

QUESTION 2

Which aspect of the new storage system's performance requirements is critical to the success of the project and should be determined before any purchase takes place?

- A. Whether it supports automatic tiering
- B. The number of SSD drives it will hold
- C. Whether 8Gb/s Fibre Channel or 10Gb/s Ethernet technology provides more storage bandwidth
- D. The number of IOPS it must support to host the required amount of pooled and dedicated virtual desktops

Answer: A

QUESTION 3

The architect needs to evaluate the options for replicating user profiles across all sites. Which two pieces of information should the architect collect to analyze the options? (Choose two.)

- A. WAN traffic
- B. License requirements
- C. Storage infrastructure
- D. Database configuration

Answer: BD

QUESTION 4

What are two potential risks in the existing environment that the architect must address in the proposed virtual solution? (Choose two.)

- A. Local profiles are used and administrators manually delete them when necessary.
- B. Installation of PositivelyPeople is performed manually based on a thoroughly documented process.
- C. No logon scripts are enabled for users because the company abandoned logon scripts last year in favor of GPOs.
- D. Users log on to the company environment based on Active Directory credentials, but the PositivelyFinance application requires secondary credentials.

Answer: AB

QUESTION 5

Which solution meets the criteria for reducing the general IT costs for the Research and Training user group to access their applications?

- A. VM Hosted applications
- B. Streamed server OS machines
- C. Dedicated desktop OS machines

D. Pooled desktop OS machine with Personal vDisk

Answer: B

QUESTION 6

Scenario:

Users from a remote research lab have very limited WAN bandwidth to their nearest datacenter. The users need to print over the WAN. What should an architect recommend to optimize printer bandwidth?

- A. Optimize WAN traffic through CloudBridge.
- B. Increase the WAN bandwidth through a WAN link upgrade.
- C. Restrict overall session bandwidth through a HDX bandwidth policy.
- D. Restrict printer redirection bandwidth through a HDX bandwidth policy.

Answer: A

QUESTION 7

The architect recommended pooled desktop OS machines with Personal vDisks for the Nurses, Imaging, and Radiology user group. How should an engineer implement antivirus software on these desktop OS machines?

- A. Install the antivirus software into the base image.
- B. Deploy the antivirus package as an App-V application.
- C. Deploy the antivirus software through a Group Policy startup script.
- D. Install the antivirus software in the master Personal vDisk as a user-installed application.

Answer: A

QUESTION 8

Which endpoint devices must be replaced to support the Streamed VHD method of desktop delivery?

- A. Windows 7
- B. Windows XP
- C. Linux thin clients
- D. PCs running Internet Explorer 7

Answer: C

QUESTION 9

The company plans to reduce their storage requirement by using thin provisioning with XenServer hosts. Which storage option should the architect verify for capability in the current environment?

- A. NFS
- B. CIFS
- C. iSCSI
- D. Fibre Channel

Answer: A

QUESTION 10

Which consideration is unnecessary for the PositivelyPeople application in the new environment?

- A. File security
- B. Secure remote access
- C. Access to legacy mainframe
- D. Support for secured print jobs

Answer: C

QUESTION 11

Given the current desktop build process, what should an architect recommend on the new virtual platform for this environment while minimizing the number of required management servers?

- A. Continue with current process
- B. Use Ghost to clone a master image
- C. Use Machine Creation Services to clone a master image
- D. Use Provisioning Services servers to create a master target device

Answer: C

QUESTION 12

Which two budgetary items should the architect consider to meet the needs of remote users in the new environment? (Choose two.)

- A. Microsoft licenses
- B. NetScaler infrastructure
- C. Additional mobile devices
- D. Two-factor authentication solution

Answer: BD

QUESTION 13

Some management staff print large documents over WAN connections. What must the architect consider to optimize printing to a local printer from laptops?

- A. Configure session printers
- B. Configure Universal Print Server
- C. Disable 'Direct connection to print servers'
- D. Allow mapping to all client printers to session

Answer: D

QUESTION 14

Which two options should the architect recommend to enable two-factor authentication for remote users? (Choose two.)

- A. Configure Citrix Single Sign-On.
- B. Configure LDAP authentication on NetScaler.
- C. Configure RADIUS authentication on NetScaler.
- D. Configure 'Username and Password' in StoreFront.

Answer: BC

QUESTION 15

Which two business drivers are critical for the Contractors user group? (Choose two.)

- A. Printing security
- B. Secure remote access
- C. Granular security policies
- D. Support for mobile devices

Answer: BC

QUESTION 16

Scenario:

Legacy GPO policies should NOT be applied to users in the new environment. New GPOs should be configured to ensure maximum performance across all virtual applications and desktops. Which two actions should the architect recommend to meet these requirements? (Choose two.)

- A. Enable loopback processing in Merge mode.
- B. Enable loopback processing in Replace mode.
- C. Apply the policy to the OUs containing the user accounts.
- D. Apply the policy to the domain root with a WMI filter excluding the Windows XP OS type.
- E. Apply the policy to the domain root with a deny ACL on the OU containing legacy machines.
- F. Apply the policy to the OUs containing the desktop OS machines' and server OS machines' computer accounts.

Answer: BF

QUESTION 17

Which three user groups require remote access? (Choose three.)

- A. IT
- B. Call Center
- C. Human Resources
- D. Emergency Response Team
- E. Nurses, Imaging, and Radiology

Answer: ACD

QUESTION 18

An architect is assessing the existing backup strategy and recommending changes to suit the new virtual desktop environment. Which two critical components should the architect recommend for nightly backup, as they cannot be easily recreated in the event of a disaster? (Choose two.)

- A. User's Personal vDisks
- B. Pooled desktop master image
- C. Servers hosting StoreFront roles
- D. Servers hosting Delivery Controller roles
- E. SQL Server hosting the XenDesktop database

Answer: AE

QUESTION 19

Which current infrastructure limitation prevents doctors in London from working remotely if the London datacenter shuts down unexpectedly?

- A. There are no roaming user profiles.
- B. There is no failover datacenter for London.
- C. There are no backups of the SQL Server databases.
- D. There is no disaster recovery plan for the mobile workforce.

Answer: D

QUESTION 20

Contractors need a consistent environment to perform quality assurance testing of applications. Which two types of solutions should the architect recommend? (Choose two.)

- A. Random server OS machines
- B. Pooled desktop OS machines
- C. Dedicated desktop OS machines
- D. Pooled desktop OS machines with Personal vDisk

Answer: AB

QUESTION 21

Scenario:

An architect is designing a NetScaler solution that implements GSLB. The solution must provide StoreFront access through a single URL worldwide and maintain a highly available configuration globally as well as locally. How many StoreFront servers are recommended to implement this configuration?

- A. Six, one site for each store
- B. Six, two in each datacenter
- C. Three, one in each datacenter
- D. Four, two in the primary and two in the backup datacenter

Answer: B

QUESTION 22

Scenario:

Personnel are being trained using a test XenDesktop site. They must be restricted to accessing this site only while on company premises. Which StoreFront configuration should the architect recommend?

- A. Enable the Domain pass-through authentication method on the store.
- B. Disable the Pass-through from NetScaler authentication method on the store.
- C. Configure the StoreFront servers with a separate store for this site, NOT enabled for remote access.
- D. Install a certificate issued by the internal Windows Certificate Services server on the StoreFront servers.

Answer: C

QUESTION 23

Which two design decisions should the architect recommend to improve the user experience? (Choose two.)

- A. Configure Clipboard policy
- B. Configure Drive encryption

- C. Configure Flash redirection
- D. Configure Media redirection

Answer: CD

QUESTION 24

Which two manually performed tasks can be streamlined by implementing a Citrix environment? (Choose two.)

- A. Database backup
- B. Application patching
- C. Security assessment
- D. Certificate management
- E. Operating system installation

Answer: BE

QUESTION 25

The company's HDX policies must apply to a pooled virtual desktop environment without affecting any virtual applications. How should an architect apply the HDX policies?

- A. By using a SmartAccess filter
- B. By using a client name policy filter
- C. By using a delivery group type policy filter
- D. By giving the virtual desktop policy a higher priority than the virtual application policy

Answer: C

QUESTION 26

Scenario:

HR staff have a requirement to print confidential information to USB-attached printers in their offices. Any printer model may be used for this purpose. Which two recommended options should the architect consider for this solution? (Choose two.)

- A. Configuring 'Client printer names'
- B. Configuring 'Auto-create client printers'
- C. Configuring 'Universal print driver usage'
- D. Enabling 'Automatic installation of in-box printer drivers'

Answer: BC

QUESTION 27

The architect should recommend a Universal License because it is required for _____. (Choose the phrase that correctly completes the sentence.)

- A. ICA Proxy
- B. SmartAccess
- C. two-factor authentication
- D. SSL access inside the network

Answer: B

QUESTION 28

An architect recommends full SSL VPN connections for remote users. Which type of NetScaler license should be applied for these users?

- A. User
- B. Device
- C. Platform
- D. Universal

Answer: D

QUESTION 29

Which action should an architect avoid recommending when designing a monitoring solution?

- A. Installing vendor-supplied tools to monitor physical hardware
- B. Installing Command Center to monitor NetScaler appliances
- C. Installing agents onto NetScaler appliances to monitor utilization
- D. Installing Citrix Director to monitor the XenDesktop environment

Answer: C

QUESTION 30

An architect is explaining options for profile management. What is one issue that the architect must address in the current environment?

- A. Folder redirection is implemented.
- B. Roaming users have local profiles.
- C. Startup scripts are used in the environment.
- D. PositivelyFinance does NOT work with roaming profiles.

Answer: D

QUESTION 31

Which tool should the architect use in preparation for migration to Windows Server 2012 to determine application compatibility and suitability for virtualization?

- A. AppDNA
- B. App-V Sequencer
- C. EdgeSight for End Points
- D. Windows Upgrade Advisor

Answer: A

QUESTION 32

All nurses currently use Windows XP workstations to access critical medical applications and require different applications depending on their role. Which two delivery models meet the nurses' requirements? (Choose two.)

- A. Local VM deployment with streamed applications
- B. Streamed VHD deployment with streamed applications
- C. Hosted server OS deployment with locally installed applications
- D. Hosted desktop OS deployment with locally installed applications

Answer: CD

QUESTION 33

In the new environment, the PositivelyFinance application will be deployed as a server OS-hosted application. Which two policy settings should an architect recommend to prevent data leakage from the PositivelyFinance application? (Choose two.)

- A. HDX policy setting with Client drive mapping set to 'Prohibited'
- B. HDX policy setting with Client Clipboard Redirection set to 'Prohibited'
- C. HDX policy setting with File redirection on Client Network drives set to 'Prohibited'
- D. Active Directory group policy with the Do not allow clipboard redirection setting set to 'Disabled'
- E. Active Directory group policy with the Prevent access to drives setting set to 'Restrict all drives'

Answer: AB

QUESTION 34

An architect is evaluating the user profile management solution for the desktop and application virtualization solution. Which two pieces of information should the architect collect? (Choose two.)

- A. User time zone
- B. User profile size
- C. Installed language pack
- D. Client device CPU/RAM
- E. Application compatibility of profile type

Answer: BE

QUESTION 35

Which IOPS figures must an architect take into account when determining the IOPS requirements for a user group?

- A. logical, logon, and raw
- B. functional, logoff, and boot
- C. steady state, boot, and raw
- D. steady state, logon, and boot

Answer: D

QUESTION 36

Which three statements are true regarding the Radiology group? (Choose three.)

- A. Mobility is important to Radiology users.
- B. Mobility is unimportant to Radiology users.
- C. Virtualization resource requirements are high.
- D. Smooth Roaming is important to Radiology users.
- E. Virtualization resource requirements are moderate.
- F. Smooth Roaming is unimportant to Radiology users.

Answer: BCD

QUESTION 37

An architect recommends using the monitoring function of Citrix Director to determine if users can connect to applications. Which Windows service should the architect also include in the monitoring solution?

- A. Citrix Configuration Service on the Delivery Controller
- B. Citrix Configuration Replication on the StoreFront server
- C. World Wide Web Publishing Service on the StoreFront server
- D. World Wide Web Publishing Service on the server OS machine

Answer: C

QUESTION 38

An architect is designing a solution that minimizes the storage footprint by utilizing thin provisioning in the datacenter. Which solution should the architect recommend for XenServer shared storage?

- A. NFS
- B. CIFS
- C. iSCSI
- D. Fibre Channel

Answer: A

QUESTION 39

Scenario:

The company is considering replacing the Windows XP computers with new devices as part of the new solution. The new devices should require minimal support and administration, while providing a centrally managed desktop solution. Which two methods should an architect consider to meet these requirements? (Choose two.)

- A. Client OS desktop delivery group accessed from thin-client devices by using Citrix Receiver
- B. Server OS desktop delivery group accessed from thin-client devices by using Citrix Receiver
- C. Client OS desktop delivery group accessed from Windows-based physical desktops by using Citrix Receiver
- D. Server OS application delivery group accessed from Windows-based physical desktops by using Citrix Receiver

Answer: AB

QUESTION 40

Scenario:

Some contractors require access to various corporate applications. They must also be able to install their own applications within the environment for testing purposes. Which two delivery methods fulfill these requirements? (Choose two.)

- A. Hosted server OS with Profile Management enabled
- B. Pooled hosted desktop OS with Personal vDisk enabled
- C. Hosted server OS with persistent server operating system
- D. Assigned hosted desktop OS with persistent desktop operating system

Answer: BD

QUESTION 41

An architect is recommending an antivirus policy for Provisioning Services servers that are being used to provision pooled desktops. Which two options should the architect recommend for optimal

performance? (Choose two.)

- A. Enable scan on read
- B. Prohibit write cache scanning
- C. Increase scheduled scanning frequency
- D. Exclude scanning of the target device drivers

Answer: BD

QUESTION 42

An architect needs to design a solution that optimizes resource usage for Call Center users. How do server OS machines achieve this goal?

- A. By offering optimal performance
- B. By providing rapid application rollouts
- C. By ensuring the greatest security level by design
- D. By accommodating high user density on each server

Answer: D

QUESTION 43

The company's security officer has stated that for compliance reasons, all internal and external network traffic must be encrypted. Which additional type of encryption should the architect recommend?

- A. SecureICA
- B. IPsec
- C. SSL and SecureICA
- D. L2TP

Answer: C

QUESTION 44

The company's security officer has stated that for compliance reasons, all internal and external network traffic must be encrypted. How should SecureICA be implemented?

- A. By using NetScaler
- B. By enabling SecureICA on delivery groups
- C. By implementing an Active Directory group policy to configure IPsec
- D. By installing an SSL certificate in the master image

Answer: B

QUESTION 45

The company's security officer has stated that for compliance reasons, all internal and external network traffic must be encrypted. How should IPsec be implemented?

- A. By using NetScaler
- B. By implementing secure delivery groups
- C. By implementing an Active Directory group policy
- D. By configuring a local IPsec policy in the master image

Answer: C

QUESTION 46

The company's security officer has stated that for compliance reasons, all internal and external network traffic must be encrypted. How should SSL be implemented?

- A. By installing certificates on Citrix infrastructure components
- B. By configuring an Active Directory group policy to distribute SSL certificates
- C. By installing a certificate authority server in the DMZ
- D. By installing an SSL certificate in the master image

Answer: A

QUESTION 47

The company's security officer has stated that for compliance reasons, all internal and external network traffic must be encrypted. How should L2TP be implemented?

- A. By using NetScaler
- B. By implementing secure delivery groups
- C. By implementing an Active Directory group policy to configure L2TP
- D. By installing a Windows Server operating system with Routing and Remote Access Service

Answer: C

QUESTION 48

What are the benefits of using SecureICA to meet the company's compliance requirements?

- A. It encrypts internal ICA traffic.
- B. It encrypts ICA traffic from remote users.
- C. It is required to enable the SSL Relay service.
- D. It complies with industry-standard SSL encryption requirements.

Answer: B

QUESTION 49

What are the benefits of using IPsec to meet the company's compliance requirements?

- A. It encrypts internal network traffic.
- B. It encrypts ICA traffic from remote users.
- C. It is required to enable the SSL Relay service.
- D. It complies with industry-standard IPsec encryption requirements.

Answer: A

QUESTION 50

What are the benefits of using SSL to meet the company's compliance requirements?

- A. It eliminates the need to distribute an internal root certificate.
- B. It encrypts end-to-end traffic from remote users.
- C. It is required to enable the SSL Relay service.
- D. It provides secure internal and external network communication.

Answer: D

QUESTION 51

What are the benefits of using SSL to meet the company's compliance requirements?

- A. It consumes lower CPU resources than other encryption technologies.
- B. It is supported on industry-standard devices.
- C. It is required to enable the SSL Relay service.
- D. It enables two-factor authentication.

Answer: B

QUESTION 52

What are the benefits of using L2TP to meet the company's compliance requirements?

- A. It encrypts internal ICA traffic.
- B. It encrypts ICA traffic from remote users.
- C. It is required to enable the SSL Relay service.
- D. It complies with industry-standard SSL encryption requirements.

Answer: B

QUESTION 53

Scenario:

The company needs to ensure that the provisioning traffic does NOT interfere with the existing PXE solution. The Provisioning Services servers will be connected to a 10 Gbps network. What should the architect recommend?

- A. Multi-homed Provisioning Services servers on existing server VLANs
- B. Multi-homed Provisioning Services server on dedicated VLANs
- C. Multi-homed Provisioning Services server on a dedicated physical switch
- D. Multi-homed Provisioning Services server with NetScaler App Firewall

Answer: B

QUESTION 54

Scenario:

The company needs to ensure that the provisioning traffic does NOT interfere with the existing PXE solution. The Provisioning Services servers will be connected to a 10 Gbps network. How should the architect recommend that a highly available multi-homed Provisioning Services server configuration be implemented?

- A. By installing multiple NICs in the Provisioning Services server in each datacenter
- B. By deploying one Provisioning Services server in the primary and one in the secondary datacenter
- C. By deploying two Provisioning Services servers in the same datacenter
- D. By using NetScaler with GSLB to load balance the Provisioning Services servers in each datacenter

Answer: D

QUESTION 55

Scenario:

The company needs to ensure that the provisioning traffic does NOT interfere with the existing

PXE solution. The Provisioning Services servers will be connected to a 10 Gbps network. How should the architect implement a highly available Provisioning Services server on dedicated VLANs?

- A. By installing multiple NICs in one Provisioning Services server in each datacenter
- B. By deploying one Provisioning Services server in the primary and one in the secondary datacenter
- C. By deploying two Provisioning Services servers in each datacenter
- D. By using NetScaler with GSLB to load balance the Provisioning Services servers in each datacenter

Answer: C

QUESTION 56

Scenario:

The company needs to ensure that the provisioning traffic does NOT interfere with the existing PXE solution. The Provisioning Services servers will be connected to a 10 Gbps network. How should the architect implement a highly available Provisioning Services server on dedicated physical switches?

- A. By installing multiple NICs in one Provisioning Services server in each datacenter
- B. By deploying one Provisioning Services server on a dedicated switch in the primary and secondary datacenters
- C. By deploying two Provisioning Services servers on dedicated switches in each datacenter
- D. By using NetScaler with GSLB to load balance the Provisioning Services servers on dedicated switches in each datacenter

Answer: B

QUESTION 57

Scenario:

The company needs to ensure that the provisioning traffic does NOT interfere with the existing PXE solution. The Provisioning Services servers will be connected to a 10 Gbps network. How should the architect implement a highly available Provisioning Services server by using NetScaler App Firewall?

- A. By implementing NetScaler App Firewall policies
- B. By deploying GSLB on NetScaler
- C. By deploying TFTP load balancing using NetScaler
- D. By load balancing Provisioning Services streaming services using NetScaler

Answer: A

QUESTION 58

Scenario:

The company needs to ensure that the provisioning traffic does NOT interfere with the existing PXE solution. The Provisioning Services servers will be connected to a 10 Gbps network. How do multi-homed Provisioning Services servers help the company secure streaming traffic?

- A. Multiple NICs separate disk and user data traffic.
- B. Multiple NICs enable disk data traffic to be encrypted with IPsec.
- C. Multiple NICs allow the necessary TCP offload settings to be configured on the streaming NIC.
- D. Multiple NICs provide multiple IP addresses that can be dedicated to streaming traffic.

Answer: A

QUESTION 59

Scenario:

The company needs to ensure that the provisioning traffic does NOT interfere with the existing PXE solution. The Provisioning Services servers will be connected to a 10 Gbps network. How does using a dedicated VLAN help the company secure streaming traffic?

- A. Dedicated VLANs ensure streaming traffic is NOT visible to other VLANs in the datacenter.
- B. Dedicated VLANs enable streaming traffic to be encrypted with IPsec.
- C. Dedicated VLANs allow the necessary TCP offload settings to be configured on the streaming NIC.
- D. Dedicated VLANs provide multiple IP addresses that can be dedicated to streaming traffic.

Answer: A

QUESTION 60

Scenario:

The company needs to ensure that the provisioning traffic does NOT interfere with the existing PXE solution. The Provisioning Services servers will be connected to a 10 Gbps network. How does using a dedicated switch help the company secure streaming traffic?

- A. Dedicated switches enable streaming traffic to be encrypted with IPsec.
- B. Dedicated switches allow the necessary TCP offload settings to be configured on the streaming NIC.
- C. Dedicated switches provide multiple IP addresses that can be dedicated to streaming traffic.

Answer: B

QUESTION 61

Scenario:

The company needs to ensure that the provisioning traffic does NOT interfere with the existing PXE solution. The Provisioning Services servers will be connected to a 10 Gbps network. How does using a dedicated switch help the company secure streaming traffic?

- A. Dedicated VLANs ensure streaming traffic is NOT visible to other VLANs in the datacenter.
- B. Dedicated switches enable streaming traffic to be encrypted with IPsec.
- C. Dedicated switches allow the necessary TCP offload settings to be configured on the streaming NIC.
- D. Dedicated switches enable isolation of Spanning Tree instances.

Answer: C

QUESTION 62

Scenario:

The company needs to ensure that the provisioning traffic does NOT interfere with the existing PXE solution. The Provisioning Services servers will be connected to a 10 Gbps network. How does using NetScaler App Firewall help the company secure streaming traffic?

- A. NetScaler App Firewall detects network-based threats at the application layer.
- B. NetScaler App Firewall enables streaming traffic to be encrypted with IPsec.
- C. NetScaler App Firewall removes the need for Access Control Lists on switches.
- D. NetScaler App Firewall enables isolation of streaming traffic from other VLANs.

Answer: D

QUESTION 63

Scenario:

The architect for the company has identified that virtualizing the entire server infrastructure will provide the best return on investment (ROI) and lowest maintenance costs for the new infrastructure. In order to proceed with this recommendation, a monitoring strategy must be put in place to ensure that the virtualization platform does NOT become overloaded. Which virtualization component should an architect monitor to identify virtual desktop bottlenecks?

- A. XenServer hosts
- B. Delivery Controllers
- C. Provisioning Services servers
- D. Server OS machines

Answer: A

QUESTION 64

Scenario:

The architect for the company has identified that virtualizing the entire server infrastructure will provide the best return on investment (ROI) and lowest maintenance costs for the new infrastructure. In order to proceed with this recommendation, a monitoring strategy must be put in place to ensure that the virtualization platform does NOT become overloaded. How can the architect identify if the XenServer hosts are the source of a bottleneck?

- A. Identify if the CPU consumption is above 85%
- B. Identify if memory consumption is above 90%
- C. Identify if disk queue length increases above zero
- D. Identify if network utilization rises above 50%

Answer: A

QUESTION 65

How can the architect identify if the Delivery Controller is the source of a bottleneck?

- A. Identify excessive memory and network utilization.
- B. Identify excessive CPU consumption.
- C. Identify excessive disk and network I/O.
- D. Identify excessive disk I/O and page file utilization.

Answer: B

QUESTION 66

How can the architect identify if the Provisioning Services servers are the source of a bottleneck?

- A. Identify excessive CPU and memory consumption.
- B. Identify excessive memory and network utilization.
- C. Identify excessive CPU and network I/O.
- D. Identify excessive disk I/O and page file utilization.

Answer: C

QUESTION 67

How can the architect identify if the server OS machines are the source of a bottleneck?

- A. Identify excessive CPU and memory consumption.
- B. Identify excessive memory and network utilization.
- C. Identify excessive disk and network I/O.
- D. Identify excessive disk I/O and page file utilization.

Answer: D

QUESTION 68

Why should CPU consumption above 85% be used to identify bottlenecks?

- A. At least 20% of resources should be available at all times.
- B. XenServer host CPU utilization above 85% causes excessive context switching.
- C. XenServer host reserves 20% of all CPU for context switching.
- D. Running XenCenter will consume 20% of all CPU resources.

Answer: A

QUESTION 69

Why should memory consumption above 90% be used to identify bottlenecks?

- A. At least 20% of resources should be available at all times.
- B. XenServer host CPU utilization above 90% causes excessive paging.
- C. XenServer host reserves 20% of all memory for paging.
- D. Running XenCenter will consume 20% of all memory resources.

Answer: A

QUESTION 70

Why should disk queue length above zero be used to identify bottlenecks?

- A. This indicates excessive I/O and a disk bottleneck.
- B. This indicates excessive swap file utilization.
- C. This indicates insufficient RAM.
- D. This indicates a failed disk.

Answer: A

Explanation:

<http://www.ithacks.com/2008/09/12/high-avg-disk-queue-length-and-finding-the-cause/>

QUESTION 71

Why should the network utilization rising above 50% be used to identify bottlenecks?

- A. This indicates insufficient bandwidth for virtual machines delivered by Provisioning Services.
- B. This indicates a saturated network segment.
- C. This indicates a failed network switch.
- D. This indicates an incorrectly configured router.

Answer: B

QUESTION 72

Why should memory and network utilization be used to identify bottlenecks?

- A. High memory and network utilization of the Delivery Controller can indicate a high volume of user logons, indicating that the server may NOT have sufficient resources to handle the load.
- B. High memory and network utilization of the Delivery Controller can indicate that the target device will encounter delays when mounting new vDisks.
- C. High memory and network utilization of the Delivery Controller may indicate that a high number of processor-intensive applications are being utilized by the virtual desktop users.
- D. High memory and network utilization of the Delivery Controller can indicate the presence of a virus or malware.

Answer: A

QUESTION 73

Why should CPU consumption be used to identify bottlenecks?

- A. High CPU utilization of the Delivery Controller can indicate a high volume of user logons, indicating that the server may NOT have sufficient resources to handle the load.
- B. High CPU utilization on the Delivery Controller can indicate that the target device will encounter delays when mounting new vDisks.
- C. High CPU utilization of the Delivery Controller may indicate that a high number of processor-intensive applications are being utilized by the virtual desktop users.
- D. High CPU utilization of the Delivery Controller can indicate the presence of a virus or malware.

Answer: A

QUESTION 74

Why should disk and network I/O be used to identify bottlenecks?

- A. High disk and network I/O utilization of the Delivery Controller can indicate a high volume of user logons, indicating that the server may NOT have sufficient resources to handle the load.
- B. High disk and network I/O utilization on the Delivery Controller can indicate that the target device will encounter delays when mounting new vDisks.
- C. High disk and network I/O utilization of the Delivery Controller may indicate that a high number of processor-intensive applications are being utilized by the virtual desktop users.
- D. High disk and network I/O utilization of the Delivery Controller can indicate the presence of a virus or malware.

Answer: B

QUESTION 75

Why should disk I/O and page file utilization be used to identify bottlenecks?

- A. High disk I/O and page file utilization of the Delivery Controller can indicate a high volume of user logons, indicating that the server may NOT have sufficient resources to handle the load.
- B. High disk I/O and page file utilization on the Delivery Controller can indicate that the target device will encounter delays when mounting new vDisks.
- C. High disk I/O and page file utilization of the Delivery Controller may indicate that a high number of processor-intensive applications are being utilized by the virtual desktop users.
- D. High disk I/O and page file utilization of the Delivery Controller can indicate the presence of a virus or malware.

Answer: C

QUESTION 76

Why should CPU and memory consumption be used to identify bottlenecks?

- A. Excessive CPU and memory consumption will slow the loading of vDisks and cache files by Provisioning Services.
- B. Excessive CPU and memory consumption on the vDisk store will slow down the PXE boot process.
- C. Excessive CPU and memory consumption can increase fragmentation of the TFTP boot strap file.
- D. Excessive CPU and memory consumption can increase fragmentation of the vDisks.

Answer: A

QUESTION 77

Why should memory and network utilization be used to identify bottlenecks?

- A. Excessive memory and network utilization will slow the loading of vDisks and cache files by Provisioning Services.
- B. Excessive memory and network utilization on the vDisk store will slow down the PXE boot process.
- C. Excessive memory and network utilization can increase fragmentation of the TFTP boot strap file.
- D. Excessive memory and network utilization can increase fragmentation of the vDisks.

Answer: B

QUESTION 78

Why should CPU and network I/O be used to identify bottlenecks?

- A. Excessive consumption of CPU or network I/O indicates there are too many target devices.
- B. Excessive consumption of CPU or network I/O indicates a network misconfiguration.
- C. Excessive consumption of CPU or network I/O indicates that the anti-virus configuration could be causing a bottleneck.
- D. Excessive consumption of CPU or network I/O indicates that the system is low on virtual memory.

Answer: A

QUESTION 79

Why should disk I/O and page file utilization be used to identify bottlenecks?

- A. Excessive disk I/O and page file utilization will slow the loading of vDisks and cache files by Provisioning Services.
- B. Excessive disk I/O and page file utilization on the vDisk store will slow down the PXE boot process.
- C. Excessive disk I/O and page file utilization can increase fragmentation of the TFTP boot strap file.
- D. Excessive disk I/O and page file utilization can increase fragmentation of the vDisks.

Answer: D

QUESTION 80

Why should CPU and memory consumption be used to identify bottlenecks?

- A. Excessive CPU and memory consumption will slow the creation of new sessions.
- B. Excessive CPU and memory consumption on the data collector will slow down Web Interface authentication.
- C. Excessive CPU and memory consumption on the data collector will slow down application enumeration.
- D. Excessive CPU and memory consumption on the XenApp server will affect the local host cache.

Answer: A

QUESTION 81

Why should memory and network utilization be used to identify bottlenecks?

- A. Excessive memory and network utilization will slow the creation of new sessions.
- B. Excessive memory and network utilization on the data collector will slow down Web Interface authentication.
- C. Excessive memory and network utilization on the data collector will slow down application enumeration.
- D. Excessive memory and network utilization on the XenApp server will affect the local host cache.

Answer: B

QUESTION 82

Why should disk and network I/O be used to identify bottlenecks?

- A. Excessive disk and network I/O will slow the creation of new sessions.
- B. Excessive disk and network I/O on the data collector will slow down Web Interface authentication.
- C. Excessive disk and network I/O on the data collector will slow down application enumeration.
- D. Excessive disk and network I/O on the XenApp server will affect the local host cache.

Answer: C

QUESTION 83

Why should disk I/O and page file utilization be used to identify bottlenecks?

- A. Excessive disk I/O and page file utilization will slow the creation of new sessions.
- B. Excessive disk I/O and page file utilization on the data collector will slow down Web Interface authentication.
- C. Excessive disk I/O and page file utilization on the data collector will slow down application enumeration.
- D. Excessive disk I/O and page file utilization on the XenApp server will affect the local host cache.

Answer: D

QUESTION 84

Scenario:

The company is designing a cost-efficient environment for the call center workers. The IT department is replacing the existing thin clients with newer models. Which XenDesktop (Flexcast) model should the architect recommend?

- A. Hosted shared
- B. Hosted VDI
- C. Streamed VHD
- D. Local VM

Answer: A

QUESTION 85

Scenario:

The company is designing a cost-efficient environment for the call center workers. The IT department is replacing the existing thin clients with newer models. Only block storage is available on the shared storage of the hypervisor. How should the architect recommend that the hosted shared servers be provisioned to fulfill the virtualization requirements for the call center while keeping the impact to storage as low as possible?

- A. By using Machine Creation Services
- B. By using Provisioning Services
- C. By manually installing the operating system
- D. By using cloned VM templates

Answer: B

QUESTION 86

Scenario:

The company is designing a cost-efficient environment for the call center workers. The IT department is replacing the existing thin clients with newer models. Only block storage is available on the shared storage of the hypervisor. How should the architect recommend that Hosted VDI be provisioned to fulfill the virtualization requirements for the call center?

- A. By using Machine Creation Services
- B. By using Provisioning Services
- C. By manually installing the operating system
- D. By using cloned VM templates

Answer: A

QUESTION 87

Scenario:

The company is designing a cost-efficient environment for the call center workers. The IT department is replacing the existing thin clients with newer models. How should the architect recommend that the target devices boot from the provisioning server?

- A. By configuring a Windows deployment server
- B. By using SFTP
- C. By using FTP
- D. By using DHCP

Answer: D

Explanation:

<http://support.citrix.com/proddocs/topic/provisioning-61/pvs-boot-devices-utility.html>

QUESTION 88

Scenario:

The company is designing a cost-efficient environment for the call center workers. The IT department is replacing the existing thin clients with newer models. How should the architect recommend that the Synchronizer be deployed?

- A. By deploying a Hyper-V virtual appliance
- B. By installing the Synchronizer software on a Hyper-V server
- C. By installing a Synchronizer virtual appliance on XenServer
- D. By booting from the Synchronizer ISO image

Answer: C

Explanation:

http://support.citrix.com/servlet/KbServlet/download/29370-102-664116/XenClient_2_1_Synchronizer_Setup_and_Usage_Guide.pdf (page 7)

QUESTION 89

Scenario:

The company is designing a cost-efficient environment for the call center workers. The IT department is replacing the existing thin clients with newer models. What are the benefits of using hosted shared servers with Machine Creation Services?

- A. Highest user density and lowest cost
- B. Highest level of user personalization
- C. Lowest storage requirement and highest user density
- D. Lowest cost and highest application compatibility

Answer: A

QUESTION 90

Scenario:

The company is designing a cost-efficient environment for the call center workers. The IT department is replacing the existing thin clients with newer models. What are the benefits of using hosted shared servers with Provisioning Services?

- A. Highest user density and lowest cost
- B. Highest level of user personalization
- C. Rapid provisioning and highest user density with the lowest storage requirement
- D. Low cost and highest application compatibility

Answer: C

QUESTION 91

Scenario:

The company is designing a cost-efficient environment for the call center workers. The IT department is replacing the existing thin clients with newer models. What are the benefits of using hosted shared servers and manually installing the operating system?

- A. Highest user density and lowest cost
- B. Highest level of user personalization
- C. Lowest storage performance requirement and highest user density
- D. Lowest cost and highest application compatibility

Answer: A

QUESTION 92

Scenario:

The company is designing a cost-efficient environment for the call center workers. The IT department is replacing the existing thin clients with newer models. What are the benefits of using hosted shared servers by using cloned VM templates?

- A. Highest user density and lowest cost
- B. Highest level of user personalization
- C. Lowest storage performance requirement and highest user density
- D. Rapid provisioning

Answer: D

QUESTION 93

Scenario:

The company is designing a cost-efficient environment for the call center workers. The IT department is replacing the existing thin clients with newer models. What are the benefits of using Hosted VDI with Machine Creation Services?

- A. Highest user density and lowest cost
- B. Highest level of user personalization
- C. Lowest storage performance requirement and highest user density
- D. Lowest cost and highest application compatibility

Answer: A

QUESTION 94

Scenario:

The company is designing a cost-efficient environment for the call center workers. The IT department is replacing the existing thin clients with newer models. What are the benefits of using Hosted VDI with Provisioning Services?

- A. Highest user density and lowest cost
- B. Highest level of user personalization
- C. Rapid provisioning and highest user density
- D. Low cost and highest application compatibility

Answer: C

QUESTION 95

Scenario:

The company is designing a cost-efficient environment for the call center workers. The IT department is replacing the existing thin clients with newer models. What are the benefits of using Hosted VDI and manually installing the operating system?

- A. Highest user density and lowest cost
- B. Highest level of user personalization
- C. Lowest storage performance requirement and highest user density
- D. Lowest cost and highest application compatibility

Answer: B

QUESTION 96

Scenario:

The company is designing a cost-efficient environment for the call center workers. The IT department is replacing the existing thin clients with newer models. What are the benefits of using Hosted VDI by using cloned VM templates?

- A. Highest user density and lowest cost
- B. Highest level of user personalization
- C. Lowest storage performance requirement and highest user density
- D. Rapid provisioning

Answer: D

QUESTION 97

Scenario:

The company is designing a cost-efficient environment for the call center workers. The IT department is replacing the existing thin clients with newer models. What are the benefits of using Streamed VHD?

- A. The ability to use local client hardware
- B. Highest level of user personalization
- C. Supports a variety of hardware configurations from a single image
- D. Remote access to applications

Answer: D

QUESTION 98

Scenario:

The company is designing a cost-efficient environment for the call center workers. The IT department is replacing the existing thin clients with newer models. What are the benefits of using local VMs?

- A. Compatibility with tablet devices
- B. Highest level of user personalization
- C. Supports a variety of hardware configurations from a single image
- D. Remote access to applications

Answer: A

QUESTION 99

The company is implementing XenDesktop globally for desktop virtualization. What is the minimum number of Delivery Controllers that an architect should recommend for high availability?

- A. Two
- B. Four
- C. Six
- D. Nine

Answer: A

QUESTION 100

The company is implementing XenDesktop globally for desktop virtualization. How should the architect recommend installment of controllers for high availability?

- A. Install one controller in London and one in Paris.
- B. Install one controller in New York and one in Hong Kong.
- C. Install one controller in Hong Kong and one in Tokyo.
- D. Install one controller in New York and one in London.

Answer: B

QUESTION 101

The company is implementing XenDesktop globally for desktop virtualization. How should the architect recommend installment of controllers for high availability?

- A. Install two controllers in London and two in Paris.
- B. Install two controllers in New York and two in Hong Kong.
- C. Install two controllers in Hong Kong and two in Tokyo.
- D. Install two controllers in New York and two in London.

Answer: D

QUESTION 102

The company is implementing XenDesktop globally for desktop virtualization. How should the architect recommend installment of controllers for high availability?

- A. Install two controllers in each datacenter.
- B. Install three controllers in New York and three in London.
- C. Install three controllers in Hong Kong and three in New York.
- D. Install three controllers in New York and three in Oslo.

Answer: A

QUESTION 103

The company is implementing XenDesktop globally for desktop virtualization. How should the architect recommend installment of controllers for high availability?

- A. Install three controllers in each datacenter.
- B. Install three controllers in New York, three in London, and three in Singapore.
- C. Install three controllers in Hong Kong, three in New York, and three in Berlin.
- D. Install four controllers in New York, four in Sydney, and one in London.

Answer: A

QUESTION 104

The company is implementing XenDesktop globally for desktop virtualization. Why should an architect recommend multiple controllers in each datacenter?

- A. To protect against controller database failure
- B. To enable users to maintain uninterrupted connection to their desktops
- C. To protect users from WAN link failure
- D. To ensure that new desktop and application sessions can be launched

Answer: D

Explanation:

<http://support.citrix.com/servlet/KbServlet/download/33432-102-705920/StoreFront%20Planning%20Guide.pdf> (page 10, delivery controllers)

QUESTION 105

Which components should an architect recommend be used to meet the secure remote access requirements while ensuring high availability?

- A. Three NetScalers, three StoreFront servers, and three Delivery Controllers: one at each datacenter
- B. Two NetScalers, two StoreFront servers, and two Delivery Controllers in the London datacenter
- C. Six NetScalers, six StoreFront servers, and six Delivery Controllers: two at each datacenter
- D. Two NetScalers in the London datacenter and two StoreFront servers and Delivery Controllers in each datacenter

Answer: C

QUESTION 106

How should the components be set up for this environment?

- A. Configure GSLB for NetScaler. Place the StoreFront servers and Delivery Controllers in the internal network.
- B. Configure high availability between the London and New York datacenter. Place the StoreFront servers and Delivery Controllers in the internal network.
- C. Configure a back-up vServer at each site. Place the StoreFront servers and Delivery Controllers in the internal network.
- D. Configure GSLB for the StoreFront servers and Delivery Controllers and place them in the internal network.

Answer: A

QUESTION 107

How should the components be set up for this environment?

- A. Configure NetScaler high availability pair. Place the StoreFront servers and Delivery Controllers in the internal network.
- B. Configure NetScaler cluster. Place the StoreFront servers and Delivery Controllers in the internal network.
- C. Configure NetScaler high availability pair. Place the StoreFront servers in the DMZ and the Delivery Controllers in the internal network.
- D. Configure NetScaler cluster. Place the StoreFront servers in the DMZ and the Delivery Controllers in the internal network.

Answer: A

QUESTION 108

How should the components be set up for this environment?

- A. Configure NetScaler high-availability pairs at each site. Place the StoreFront servers and Delivery Controllers in the internal network.
- B. Configure one NetScaler cluster at each site. Place the StoreFront servers and Delivery Controllers in the internal network.
- C. Configure NetScaler high-availability pairs at each site. Place the StoreFront servers in the DMZ and the Delivery Controllers in the internal network.
- D. Configure one NetScaler cluster at each site. Place the StoreFront servers in the DMZ and the Delivery Controllers in the internal network.

Answer: A

QUESTION 109

How should the components be set up for this environment?

- A. Configure a NetScaler cluster. Place the StoreFront servers and Delivery Controllers in the internal network.
- B. Configure NetScaler high availability. Place the StoreFront servers and Delivery Controllers in the internal network.
- C. Configure a back-up vServer. Place the StoreFront servers and Delivery Controllers in the internal network.
- D. Configure GSLB for the StoreFront servers and Delivery Controllers and place them in the internal network.

Answer: A

QUESTION 110

Why should the each component be located at each datacenter?

- A. This design allows for site failover and increases security for remote access.
- B. This design reduces component design complexity.
- C. This design simplifies administration of components.

D. This design prevents user experience from being affected in the event of a site outage.

Answer: A

QUESTION 111

Why should the two of each component be located at the London datacenter?

- A. Because it allows New York and Hong Kong to fail over to the London datacenter
- B. Because it provides secure remote access
- C. Because it allows for increased user performance
- D. Because it allows for centralized management

Answer: B

QUESTION 112

Why should two of each component be located at the London datacenter?

- A. Because it allows for Inter and Intra site high availability
- B. Because it increases security for remote access
- C. Because two components at each datacenter allow for increased user performance
- D. Because user experience will NOT be affected in the event of a site outage

Answer: A

QUESTION 113

Why should the two NetScalers be located at the London datacenter?

- A. Because it allows New York and Hong Kong to fail over to the London datacenter
- B. Because it provides secure remote access
- C. Because two components allow for increased user performance
- D. Because it allows for centralized management

Answer: A

QUESTION 114

The company needs to define its management process for desktop image releases. Which tool should the architect recommend for the image management process?

- A. Provisioning Services
- B. Hypervisor templates and snapshots
- C. Windows Deployment Services
- D. XenConvert

Answer: A

QUESTION 115

How should the architect design a release-management scheme that facilitates rollbacks?

- A. By enabling vDisk Update Management
- B. By using vDisk Versions
- C. By using snapshots

D. By using the Windows Automatic Install Kit (WAIK)

Answer: B

QUESTION 116

How should the architect use hypervisor templates to facilitate image management and rollback?

- A. By using the hypervisor API to deploy desktops from templates
- B. By using PowerShell to script desktop deployment from templates
- C. By using Workflow Studio to deploy desktops from templates
- D. By using XenServerStorageLink

Answer: A

QUESTION 117

How should the architect use Windows Deployment Services to facilitate image management?

- A. To deploy a standard base image to virtual desktops
- B. To deploy a base image from an XVA file
- C. To centralize the volume activation process
- D. To install Windows applications into an image

Answer: A

QUESTION 118

How should the architect use XenConvert to facilitate image management?

- A. To convert from a single server image to a hypervisor template
- B. To convert from a single server image into a virtual disk in VHD format
- C. To perform mass conversion of virtual machines to XenServer virtual machines
- D. To perform an unattended conversion of a virtual machine to XenServer

Answer: B

QUESTION 119

Why does using vDisk Update Management help manage the image release process?

- A. Because it automatically upgrades virtual desktops to the latest operating system version
- B. Because it provides centralized, automated single image management
- C. Because it is compatible with the Microsoft VHD specification
- D. Because it automatically deploys the latest target device drivers

Answer: B

QUESTION 120

Why does using vDisk Versions help manage the image release process?

- A. Because it automatically upgrades virtual desktops to the latest operating system version
- B. Because it provides centralized, automated single image management with rollback
- C. Because it is compatible with the Microsoft VHD specification
- D. Because it automatically deploys the latest drivers and patches

Answer: B

QUESTION 121

Why does using snapshots help manage the image release process?

- A. Because they enable rollbacks
- B. Because they help manage version control
- C. Because they use storage array features to offload host processing
- D. Because they automatically deploy the latest drivers and patches

Answer: B

QUESTION 122

Why does enabling the Windows Automatic Install Kit help manage the image release process?

- A. Because it automates the Window domain join process
- B. Because it can be configured by DHCP options
- C. Because it performs a scripted Windows installation
- D. Because it automatically deploys the latest drivers and patches

Answer: C

QUESTION 123

Why does using hypervisor templates help manage the image release process?

- A. Because they automatically upgrade virtual desktops to the latest operating system version
- B. Because they provide centralized, automated single image management
- C. Because they facilitate consistent deployment of base images
- D. Because they can be stored on shared or local storage

Answer: C

QUESTION 124

Why does using PowerShell help manage the image release process?

- A. Because it can script automatic upgrades of the deployment template
- B. Because it provides centralized, automated single image management
- C. Because it facilitates consistent deployment of base images
- D. Because PowerShell scripts can be executed from the same network share as the deployment template

Answer: C

QUESTION 125

Why does using Workflow Studio help manage the image release process?

- A. Because it can script automatic upgrades of the deployment template
- B. Because it provides centralized, automated single image management
- C. Because it facilitates consistent deployment of base images
- D. Because Workflow Studio scripts can be executed from the same network share as the deployment template

Answer: B

QUESTION 126

Why does using XenServerStorageLink help manage the image release process?

- A. Because it enables rollbacks
- B. Because it helps manage version control
- C. Because it uses storage array features to offload host processing
- D. Because it automatically deploys the latest drivers and patches

Answer: C

QUESTION 127

Why does using Windows Deployment Services help manage the image release process?

- A. Because it enables rapid rollback
- B. Because it automates deployment of current and legacy operating system versions
- C. Because it uses Hyper-V snapshots
- D. Because it automatically deploys the latest drivers and patches

Answer: D

QUESTION 128

Why does deploying a base image from an XVA file help manage the image release process?

- A. Because it supports hypervisors supported by XenDesktop
- B. Because it helps manage version control
- C. Because it uses storage array features to offload host processing
- D. Because it automatically deploys the latest drivers and patches

Answer: B

QUESTION 129

Why does centralizing volume activation help manage the image release process?

- A. Because it reduces licensing administration
- B. Because it helps manage version control
- C. Because it automates the license download process
- D. Because it enables use of Multiple Activation Keys

Answer: A

QUESTION 130

Why does installing Windows applications into an image help manage the image release process?

- A. Because it reduces application deployment time
- B. Because it standardizes the application deployment process
- C. Because it facilitates the use of App-V packages
- D. Because it automatically deploys the latest drivers and patches

Answer: A

QUESTION 131

Why does using XenConvert help manage the image release process?

- A. Because it reduces image deployment time
- B. Because it reduces the storage requirement for images
- C. Because it simplifies the process of converting images
- D. Because it provides a console to create and monitor the conversion process

Answer: D

QUESTION 132

Scenario:

The company decided to virtualize their server workloads and provide a virtual solution to all of their users. The company is looking for an image management process that is scalable but the company would also like to limit the infrastructure requirement. Which image management process should the architect recommend to deploy server OS machines and desktop OS machines?

- A. XenServer Fast Clone
- B. Machine Creation Services
- C. Provisioning Services servers
- D. Manual image provisioning process with SysPrep

Answer: B

QUESTION 133

How should the architect design the image management process using XenServer Fast Clone?

- A. Install a new Windows image utilizing a XenServer virtual machine and prepare it as the master image.
- B. Install a new Windows image utilizing a XenServer virtual machine and prepare it as the master image and install the delivery agent. Convert the virtual machine image to a template.
- C. Install a new Windows image utilizing a XenServer virtual machine and prepare it as the master image and install the delivery agent. Convert the virtual machine image using XenConvert.
- D. Install a new Windows image utilizing a XenServer virtual machine and prepare it as the master image that includes XenTools.

Answer: B

QUESTION 134

How should Machine Creation Services be implemented for this environment?

- A. Install a new Windows image utilizing a XenServer virtual machine and prepare a master image that includes the delivery agent. Clone the virtual machine.
- B. Install a new Windows image utilizing a XenServer virtual machine and prepare a master image that includes the delivery agent. Change the Windows and Office product key to use MAK.
- C. Install a new Windows image utilizing a XenServer virtual machine and prepare a master image that includes the delivery agent. Convert the virtual machine to a template.
- D. Install a new Windows image utilizing a XenServer virtual machine and prepare a master image that includes the delivery agent. Take a snapshot of the image.

Answer: D

QUESTION 135

How should Provisioning Services be used to meet the requirements of the imaging management

process for this environment?

- A. Deploy two Provisioning Services servers for each datacenter. Install a new Windows image utilizing a XenServer virtual machine and prepare it as the master image that includes the delivery agent.
- B. Deploy two Provisioning Services servers for each datacenter. Install a new Windows image utilizing a XenServer virtual machine and prepare it as the master image and install the Target Device software.
- C. Deploy one Provisioning Services server for each datacenter. Install a new Windows image utilizing a XenServer virtual machine and prepare it as the master image and install the delivery agent. Convert the virtual machine image to a template.
- D. Deploy one Provisioning Services server for each datacenter. Install a new Windows image utilizing a XenServer virtual machine and prepare it as the master image and install the delivery agent. Copy the virtual machine image using FastClone.

Answer: A

QUESTION 136

How should the architect design the image management process using Windows SysPrep?

- A. Prepare an existing machine as the master image.
- B. Install a new Windows image utilizing a XenServer virtual machine and prepare it as the master image and install the delivery agent. Run SysPrep on the virtual machine.
- C. Use a XenServer virtual machine to install a new Windows image with MAK and prepare it as the master image. Ensure that the image has two network cards.
- D. Run XenConvert on an existing machine.

Answer: C

QUESTION 137

Why is XenServer Fast Clone the best image management process design for this environment?

- A. This design provides centralized image management process.
- B. This design reduces the time to provision new machines.
- C. This design minimizes network traffic.
- D. This design improves image deployment consistency.

Answer: B

QUESTION 138

Why is this the best image management process design for this environment?

- A. This design provides centralized image management process.
- B. This design reduces the storage footprint and infrastructure server requirement.
- C. This design eliminates network traffic.
- D. This design does NOT require PXE.

Answer: A

QUESTION 139

Why is Provisioning Services technology the best image management process design for this environment?

- A. This design provides a centralized image management process.

- B. This design reduces the storage footprint.
- C. This design eliminates network traffic.
- D. This design reduces the infrastructure server requirement.

Answer: A

QUESTION 140

Why is manual image provisioning with SysPrep the appropriate image management process design for this environment?

- A. This design allows for user installed applications.
- B. This design reduces the time required to provision new machines.
- C. This design allows the use of local user profiles.
- D. This design supports the use of customized language packs.

Answer: A

QUESTION 141

Which database product should the architect recommend for production deployment?

- A. SQL Server
- B. Access
- C. SQL Server Express
- D. Oracle database

Answer: A

QUESTION 142

How should the architect implement database high availability in SQL Server?

- A. By using SQL Server Mirroring
- B. By using SQL Server replication
- C. By implementing SQL Server log shipping
- D. By using hypervisor high availability

Answer: A

QUESTION 143

How should the architect implement database protection in Access?

- A. By making copies of the .MDB file
- B. By hosting the .MDB file on a network share
- C. By enabling Volume Shadow Copy
- D. By taking hypervisor snapshots of the VM running Access

Answer: C

QUESTION 144

How should the architect implement database high availability in SQL Server Express?

- A. By using Always On Availability Groups

- B. By using SQL Server mirroring
- C. By implementing SQL Server log shipping
- D. By using the hypervisor high availability feature

Answer: D

QUESTION 145

How should the architect implement database high availability in an Oracle database?

- A. By using Oracle RAC
- B. By using Oracle DataGuard
- C. By using Oracle FailSafe
- D. By using Oracle Automatic Storage Management

Answer: C

Explanation:

<http://www.oracle.com/technetwork/database/windows/index-082893.html>

QUESTION 146

Why is database high availability an essential component of a production environment?

- A. Because the Delivery Controller is stateless
- B. Because server maintenance can be performed online
- C. Because it prevents local host cache corruption
- D. Because user data loss is prevented if a session is disconnected

Answer: A

QUESTION 147

Why is hypervisor high availability an essential component of a production database server?

- A. Because the Delivery Controller is stateless
- B. Because server maintenance can be performed online
- C. Because it prevents local host cache corruption
- D. Because user data loss is prevented if a session is disconnected

Answer: A

QUESTION 148

Why is database protection an essential component of a production environment?

- A. Because the Delivery Controller is stateless
- B. Because server maintenance can be performed online
- C. Because it prevents local host cache corruption
- D. Because user data loss is prevented if a session is disconnected

Answer: C

QUESTION 149

The company's security compliance policy requires that remote access is logged for auditing purposes. Which data sources should be captured?

- A. NetScaler logs, StoreFront logs, and Citrix Director database
- B. Configuration Logging database, NetScaler logs, and Citrix Director database
- C. StoreFront logs, System Event logs, and firewall logs
- D. Configuration Logging database, firewall logs, and Application Event log

Answer: A

QUESTION 150

How should the architect design the centralized log for NetScaler?

- A. By implementing SysLog
- B. By monitoring the Windows Security Event logs
- C. By sending NetScaler logging data to the SQL Reporting Services
- D. By implementing the SmartAuditor feature

Answer: A

QUESTION 151

How should the architect specify that the Citrix Director database be queried?

- A. By using the Citrix Director console
- B. By using SQL Management Studio
- C. By using SQL Reporting Services
- D. By using PowerShell

Answer: A

QUESTION 152

How should the architect specify that StoreFront logs are collected?

- A. By enabling tracing and automating collection of log files
- B. By enabling tracing and monitoring Windows Event logs
- C. By gathering data from the IIS Manager console and archiving it on a network share
- D. By enabling the SmartAuditor feature and IIS logging

Answer: A

QUESTION 153

How should the architect specify that the Configuration Logging database be queried?

- A. By using the Citrix Director console
- B. By using SQL Management Studio
- C. By using SQL Reporting Services
- D. By using PowerShell

Answer: B

Explanation:

<http://blogs.citrix.com/2012/03/01/how-to-set-up-a-configuration-logging-database-for-xenapp-6-5/>

QUESTION 154

Why does using SysLog help the company comply with its security policy?

- A. Because it is a centralized, industry-standard log that is easily queried
- B. Because it password-protects the audit logs for added security
- C. Because it uses a standard TCP port
- D. Because it collects logs from multiple devices

Answer: A

QUESTION 155

Why does using Windows Event Viewer help the company comply with its security policy?

- A. Because it is a centralized, industry-standard log that is easily queried
- B. Because it password-protects the audit logs for added security
- C. Because it uses a standard TCP port
- D. Because it collects logs from multiple devices

Answer: A

QUESTION 156

Why does using SQL Reporting Services help the company comply with its security policy?

- A. Because it is a centralized, industry-standard log that is easily queried
- B. Because it password-protects the audit logs for added security
- C. Because it uses a standard TCP port
- D. Because it collects logs from multiple devices

Answer: D

QUESTION 157

Why does using SmartAuditor help the company comply with its security policy?

- A. Because it is a centralized, industry-standard log that is easily queried
- B. Because it password-protects the audit logs for added security
- C. Because it uses a standard TCP port
- D. Because it collects logs from multiple devices

Answer: B

QUESTION 158

Why does using Citrix Director help the company comply with its security policy?

- A. Because it provides a centralized data repository
- B. Because it provides controlled access to monitoring functions
- C. Because it uses a standard TCP port
- D. Because it collects data from NetScaler

Answer: D

QUESTION 159

Why does using SQL Management Studio help the company comply with its security policy?

- A. Because it enables you to execute SQL queries to extract data

- B. Because it enables you to create a database to store logs
- C. Because it uses a standard TCP port
- D. Because it provides security alerts by using SQL Mail

Answer: B

QUESTION 160

Why does using SQL Reporting Services help the company comply with its security policy?

- A. Because it enables automated report delivery
- B. Because it enables PDF-based reports
- C. Because it uses a standard TCP port
- D. Because it provides security alerts by using SQL Mail

Answer: A

QUESTION 161

Why does using PowerShell help the company comply with its security policy?

- A. Because PowerShell has a commandlet for running queries from Citrix Director
- B. Because it enables automated report delivery
- C. Because it enables PDF-based reports
- D. Because it collects logs from multiple devices

Answer: A

QUESTION 162

Why does using StoreFront logs help the company comply with its security policy?

- A. Because they are centralized, industry-standard logs that are easily queried
- B. Because they use password-protection for added security
- C. Because they contain detailed records of user authentication activity
- D. Because they collect data from multiple devices

Answer: C

QUESTION 163

Why does using Windows Event logs help the company comply with its security policy?

- A. Because they are centralized, industry-standard logs that are easily queried
- B. Because they use password-protection for added security
- C. Because they contain detailed records of user authentication activity
- D. Because they collect data from multiple devices

Answer: A

QUESTION 164

Why does using the IIS Manager console help the company comply with its security policy?

- A. Because it enables you to view IIS logs to extract data
- B. Because it enables you to configure StoreFront

- C. Because it uses a standard TCP port
- D. Because it is a Microsoft Management Console snap-in

Answer: A

QUESTION 165

Why does using SmartAuditor help the company comply with its security policy?

- A. Because it records ICA sessions
- B. Because it uses proprietary codec
- C. Because it enables sessions to be searched
- D. Because it provides configuration changes for an audit trail

Answer: A

QUESTION 166

Why does using PowerShell help the company comply with its security policy?

- A. Because it provides cmdlets to query the Citrix Director database
- B. Because it enables automated report delivery
- C. Because it enables PDF-based reports
- D. Because it collects logs from multiple devices

Answer: A

QUESTION 167

The company decided to virtualize their server workloads and provide a virtual solution to all of their users. The server workloads include Delivery Controller, Citrix component servers (StoreFront, License Server), and Microsoft SQL Server for databases. How should the XenServer resource pools be designed to host all required workloads?

- A. Create two resource pools, one for the server workloads and one for the server OS machine and desktop OS machine workloads.
- B. Create one resource pool for the server, server OS machine, and desktop OS machine workloads.
- C. Create three resource pools: one for the server workloads, one for the server OS machine workloads, and one for the desktop OS machine workloads.
- D. Create three dedicated resource pools: one for the Delivery Controllers; one for virtual server OS machine and desktop OS machine workloads; and one for related infrastructure (StoreFront, Provisioning Services, backend database server, domain controller) workloads.

Answer: C

QUESTION 168

How should the resource pools be designed to host the server workloads and virtual desktops by ensuring availability?

- A. Resource pools of a maximum of 16 XenServer hosts should be created for the virtual solution. The virtual disks of the server workloads should be backed up on a daily basis and third-party backup solutions should be implemented for the desktops.
- B. Resource pools of a maximum of 32 XenServer hosts should be created for the virtual solution. The virtual disks of the server workloads should be on a storage repository to provide XenMotion and high availability capabilities. The virtual disks of the server workloads should be backed up on a daily basis.

- C. Resource pools of a maximum of 16 XenServer hosts should be created for the virtual solution. The virtual disks of all workloads should be on a shared storage repository to provide XenMotion and high availability capabilities. Furthermore, the virtual machine meta information and data should be replicated to the failover site by the new storage solution.
- D. Resource pools of a maximum of 32 XenServer hosts should be created for the virtual solution. The virtual disks of the server workloads should be on a shared storage repository to provide XenMotion and high availability capabilities. Furthermore, the virtual machine meta information and data should be copied over by a backup function.

Answer: C

QUESTION 169

Why is this the best design for the XenServer resource pools?

- A. This design ensures that all server workloads and virtual desktop workloads are logically separated and do NOT interfere with each other. Furthermore, it ensures easier management and expansion capabilities.
- B. This design provides flexibility for all workloads to use available resources within a resource pool more efficiently and ensures expansion options if the environment should grow. Furthermore, performing a backup on a daily basis provides availability of critical workloads with some downtime.
- C. This design separates server workloads from virtual desktops according to the different resource usage characteristics and avoids conflicting situations. Also, critical database services have sufficient resources within their workload-specific resource pool and failover capabilities.
- D. This design ensures logical separation of all workloads and virtual desktops. Also, providing a backup solution reduces the risk of data loss and minimizes downtime.

Answer: C

QUESTION 170

Why is this the best design for the XenServer resource pools?

- A. This design addresses all of the customer requirements by ensuring appropriate design of resource pools, high availability for critical workloads, such as the database server, as well as incorporating the new storage solution for disaster recovery purposes. This also takes into account server OS machine and desktop OS machine characteristics.
- B. This design is the most suitable since it ensures simple setup with redundancy and meets the requirement of separating the operating system types.
- C. The resource pools are based on roles, and workloads can be moved from one resource pool to another in case of maintenance as well as for disaster recovery purposes.
- D. This design is best suitable to the customer requirements because the separation of server workloads and virtual desktop workloads in different resource pools optimizes the performance and high availability.

Answer: A

QUESTION 171

The Radiology group requires that changes on the virtual desktops be retained. Which configuration should the architect specify for the XenDesktop infrastructure?

- A. Provisioning Services with cache on server persistent
- B. Provisioning Services with cache on server
- C. Provisioning Services with Personal vDisk (PvD)
- D. Provisioning Services with standard image mode

Answer: C

QUESTION 172

How should the architect design the optimal write cache storage?

- A. By implementing RAID 5 on XenServer local storage
- B. By implementing RAID 10 on XenServer shared storage
- C. By implementing RAID 3 on a NAS device
- D. By implementing RAID 6 on a server hosting the CIFS share

Answer: B

QUESTION 173

What should the architect recommend for designing the PvD storage for scalability?

- A. XenServer local storage
- B. XenServer shared storage
- C. CIFS share
- D. ShareFile StorageZones

Answer: B

QUESTION 174

Why does persistent cache enable the Radiology group to maintain their changes?

- A. Because it is maintained across restarts
- B. Because it is backed up
- C. Because it is stored in the cloud
- D. Because it is encrypted with EFS

Answer: A

QUESTION 175

Why does Provisioning Services with cache on server help the Radiology group maintain changes in their desktops?

- A. Because it is stored centrally
- B. Because it reduces XenServer shared storage consumption
- C. Because Profile Manager provides a consistent user experience
- D. Because it reduces storage IO on the XenServer local storage

Answer: A

QUESTION 176

Why does using PvD enable the Radiology group to maintain user changes?

- A. Because it maintains user changes independent of the base image
- B. Because it retains user registry information
- C. Because it allows users to use local profiles
- D. Because it retains computer policy settings from Active Directory GPO

Answer: A

QUESTION 177

Why does Provisioning Services with private image mode enable users in the Radiology group to maintain the changes to their desktops?

- A. Because it enables use of cache on server persistence
- B. Because it retains user changes in a dedicated vDisk image
- C. Because it stores user changes separate from the base image
- D. Because it provides efficient centralization of dedicated user images

Answer: C

QUESTION 178

Individual users in the Radiology group want to install a variety of third-party tools to analyze the images they use. They also need to be able to analyze a centrally stored image database that they access remotely. Which XenDesktop (FlexCast) model should the architect recommend to achieve this goal?

- A. Hosted shared
- B. Hosted VDI
- C. Streamed VHD
- D. Local VM

Answer: B

QUESTION 179

How should a hosted shared environment be implemented to allow user-installed applications?

- A. By adding users to the Local Administrators group
- B. By using Personal vDisk
- C. By adding users to the Remote Desktop Users Group
- D. By providing access to the network share that contains the App-V packages

Answer: D

QUESTION 180

How should a Hosted VDI environment be implemented to allow user-installed applications?

- A. By using Citrix Profile Management
- B. By using Personal vDisk
- C. By using statically assigned virtual desktops
- D. By using a network share that contains the App-V packages

Answer: B

QUESTION 181

How should a Streamed VHD environment be configured to allow user-installed applications?

- A. By configuring Streamed VHD in Standard mode
- B. By implementing Personal vDisk
- C. By configuring Streamed VHD in Private mode
- D. By providing access to the network share that contains the App-V packages

Answer: B

QUESTION 182

How should a Local VM environment be implemented to allow user-installed applications?

- A. By adding users to the local administrators group
- B. By using Personal vDisk
- C. By giving users access to the Synchronizer console
- D. By providing access to the network share that contains the App-V packages

Answer: A

QUESTION 183

What are the benefits of using a hosted shared environment?

- A. It retains the single image management function while allowing users to install applications.
- B. It provides a high level of security while allowing user customization.
- C. It has a low storage performance requirement and high user density.
- D. It delivers low cost and high application compatibility.

Answer: C

QUESTION 184

What are the benefits of using hosted shared environment with Personal vDisk?

- A. It retains the single image management function while allowing users to install applications.
- B. It provides a high level of security while allowing user customization.
- C. It has a low storage performance requirement and high user density.
- D. It delivers low cost and high application compatibility.

Answer: B

QUESTION 185

What are the benefits of using a Hosted VDI environment with Citrix Profile Management?

- A. It retains the single image management function while allowing users to install applications.
- B. It provides a high level of security while allowing user customization.
- C. It has a low storage performance requirement and high user density.
- D. It delivers low cost and high application compatibility.

Answer: A

QUESTION 186

What are the benefits of using a Hosted VDI environment with Personal vDisk?

- A. It retains the single image management function while allowing users to install applications.
- B. It provides a high level of security while allowing user customization.
- C. It has a low storage performance requirement and high user density.
- D. It retains the single image management function yet allows application compatibility.

Answer: A

QUESTION 187

What are the benefits of using a Hosted VDI environment with statically assigned virtual desktops?

- A. It retains the single image management function while allowing users to install applications.
- B. It provides a high level of security while allowing user customization.
- C. It has a low storage performance requirement and high user density.
- D. It allows users to install applications and access desktops remotely.

Answer: D

QUESTION 188

What are the benefits of using a Hosted VDI environment with App-V packages?

- A. It retains the single image management function while allowing users to install applications.
- B. It provides a high level of security while allowing user customization.
- C. It has a low storage performance requirement and high user density.
- D. It delivers low-cost and high application compatibility.

Answer: D

QUESTION 189

What are the benefits of using Streamed VHD?

- A. It retains the single image management function while allowing users to install applications.
- B. It provides a high level of security while allowing user customization.
- C. It has a low storage performance requirement and high user density.
- D. It delivers low-cost and high application compatibility.

Answer: B

QUESTION 190

What are the benefits of using Streamed VHD?

- A. It retains the single image management function.
- B. It provides a high level of security.
- C. It has a low storage performance requirement.
- D. It allows users to install applications.

Answer: A

QUESTION 191

What are the benefits of using local VMs?

- A. It enforces centralized user data storage.
- B. It supports GPUs with thin clients.
- C. It enables remote access to desktops.
- D. It allows users to install applications.

Answer: D

QUESTION 192

What are the benefits of using local VMs?

- A. It retains the single image management function while allowing users to install applications.
- B. Because it enables the creation of a database to store logs.
- C. It has a low storage performance requirement and high user density.
- D. It delivers low cost and high application compatibility.

Answer: A

Case Study - Soler Healthcare

Citrix Delivery Center Infrastructure Assessment

Executive Summary

Soler Healthcare is a global research university with hospitals and research facilities in locations around the world. Most divisions and branches of Soler Healthcare provide specialty services. For example, the New York branch is the home of the School of Cardiology and the Center for Cardiovascular Treatment Specialists who work at Soler Healthcare travel to the company's facilities in global locations to carry out their various medical, research and training duties.

Soler Healthcare has 5,000 full time employees, with several hundred contractors. The majority of the full-time employees are engaged in various research and training activities. All employees at Soler Healthcare are currently required to work in an office location in order to have access to the organization's network and resources.

Management, doctors and other healthcare professionals, and some field staff regularly use laptops, tablets, and smartphones. Members of the field staff encounter difficulties on a regular basis keeping files synchronized between their mobile devices and their assigned workstations in their offices.

Soler Healthcare has no immediate plans for expansion; however the management at Soler Healthcare is exploring a range of information technology (IT) solutions that will enable the organization to be more productive, efficient, and agile. Improving the company's current desktop and application delivery strategy is a high priority for management. Optimizing their desktop and application delivery strategy will improve the way the IT team provisions and delivers desktops and applications to users, and in the long run, should the organization need to expand, a more robust and flexible solution will ensure that the infrastructure is scalable.

1.1 Current Citrix Environment

Soler Healthcare does not have an existing Citrix Infrastructure. Soler Healthcare is interested in desktop virtualization. A desktop virtualization Proof-of-Concept (POC) environment was recently built for Soler Healthcare. After several demonstrations, management has decided to replace the current desktop and application delivery model with a Citrix virtualized infrastructure.

1.2 Key Project Findings

After an onsite assessment of the Soler Healthcare infrastructure and a demonstration of the POC environment, the following statements indicate the status of Soler Healthcare's IT needs and plans:

- The CIO of Soler Healthcare has been charged with the responsibility of using the upcoming desktop refresh window, during which all user office computer equipment will be evaluated and upgraded where necessary, to move to a virtualized desktop and application model.
- Soler Healthcare is interested in desktop and application virtualization to address several problems, including the following:
 - * Providing secure remote access to select users who need to access their data from remote locations outside of the corporate network.
 - * Reducing overall general IT and storage costs.

1.3 Next Steps

Following the infrastructure assessment of Soler Healthcare's IT environment, this report recommends that Soler Healthcare takes the following actions:

- Replace the physical servers and desktops with virtual servers and desktops and update the Operating System platforms to Windows Server 2012

and Windows 8.

- Provide secure remote access from any device to users in the HR, Doctors, Management, IT, the Emergency Response and Offsite Contractors groups.
- Implement a virtualization infrastructure with shared storage to support a new virtual server and desktop infrastructure.
- Integrate disaster recovery solutions into the new architecture.

Users

The Soler Healthcare environment consists of a diverse group of users. Call center staff use thin client devices to access corporate resources, while most of the other user groups access corporate resources from corporate-issued workstations and laptops. Over the last few years, users at Soler Healthcare have gradually begun to access corporate resources from tablet and smartphone devices.

Users are frustrated with the IT team difficulty rolling out new operating systems and applications, the lack of a remote access strategy, and the overall lack of flexibility in the environment. In both formal and informal settings, the CIO has presented the concept of virtualizing applications and desktops, and users have responded favorably. Thus, the management at Soler Healthcare has instructed the IT team to assess, design, and build a virtual desktop solution, creating appropriate solutions for employees based on their job requirements.

Client Devices

All Call Center employees access applications from thin-client terminals. These terminals are used to connect to a legacy mainframe environment using a terminal emulator. The legacy mainframe environment will be replaced with a Windows-based solution.

With the exception of the Call Center, the majority of the other users in the environment have laptops and desktops with single-core processors and 1GB of RAM on which they run Windows XP. Some have newer computers running Windows 7. Currently users' data is not backed up and the company does not have a disaster recovery strategy.

Some employees have handheld devices, such as tablets and smartphones. Tablets and smartphones are currently not officially supported by the IT department at Soler Healthcare; only "best effort" support is provided. Extending support to tablets and smartphones is being considered. Current breakdown of client devices at Soler Healthcare:

Device Type	# of Devices	Operating System	Browser	RAM
PC	3800	Windows XP	IE 7/8	1 GB
PC	1000	Windows 7	IE 8/9	4 GB
Thin Client	200	Linux	n/a	512 MB

Applications

The HR applications suite named PositivelyPeople is a front-end application that provides access to various modules, including payroll, time sheets, vacation requests, new hire procedures and information on former employees. The sensitive data in the PositivelyPeople application must be treated with strict confidentiality and must only be accessible to members of the HR user group. Distribution of the data must be prevented. The output of the modules can be in either Microsoft Word or Excel file format, or Adobe PDF; so these applications are currently co-located with PositivelyPeople on the HR users' desktops.

Installation of PositivelyPeople is performed manually based on a thoroughly documented process. The Finance team, which consists of the billing and collections team, also accesses the main

finance application named PositivelyFinance, from their desktops PositivelyFinance is not available from devices outside of the Finance's team vLAN. The application is only accessible to members of the Finance team. Users of the PositivelyFinance application should not be able to move or copy application data from the corporate network to any non-corporate issued devices or any devices that are not connected to the Finance's team vLAN.

The vendor for PositivelyPeople and PositivelyFinance has tested and certified the applications to run on Windows Server 2012. The IT group at Soler Healthcare needs to ensure that these applications are always available.

Several months ago, Soler Healthcare sponsored a XenDesktop POC centered on mobilizing Windows applications for the Emergency Response Team. The POC focused on the Emergency Planning application named PositivelyResponse. The POC was considered successful. Breakdown of all user groups and their application requirements:

User Group	Responsibilities	Application Requirements and Comments	Location	User Count
Doctors	<ul style="list-style-type: none"> Review and update patient records in real time. 	<ul style="list-style-type: none"> Primarily access to specialist medical applications specific to their area of work. Users work on a three-shift rotation, in which each of the three shifts covers 8 hours in a 24-hour period. 	<ul style="list-style-type: none"> Based in each location 	700
Nurses, Imaging and Radiology	<ul style="list-style-type: none"> Review and update patient records in real time. Complete daily reporting. 	<ul style="list-style-type: none"> Most users are based in medical facilities and require rapid logon and application switching as they move from one location to another within the hospital. Users work on a three-shift rotation, in which each of the three shifts covers 8 hours in a 24-hour period. 	<ul style="list-style-type: none"> Based in each location. 	2550
Billing, Collections and management	<ul style="list-style-type: none"> Manage sales and financial information. Collect bills and make payments to vendors. 	<ul style="list-style-type: none"> Users require access to the PositivelyFinance application. This includes the critical payroll application module. Individual print jobs may sometimes be very large. 	<ul style="list-style-type: none"> Based in each location. Management team will require remote access. 	150
Human Resources and Facilities	<ul style="list-style-type: none"> Assist with new employees and terminations as well as site building and asset management. 	<ul style="list-style-type: none"> Users require access to a suite of sensitive HR applications known as PositivelyPeople in addition to general office applications. Printing security is a high concern. 	<ul style="list-style-type: none"> Based in each location. Some members will require remote access capability in the new environment. 	150
IT	<ul style="list-style-type: none"> Build and maintain the infrastructure. Support business operations and users. 	<ul style="list-style-type: none"> Most users require access to all applications for administration purposes. 	<ul style="list-style-type: none"> Based in the datacenter locations with remote access and full VPN access for on-call staff. 	100
Research and Training	<ul style="list-style-type: none"> Manage research and training activities 	<ul style="list-style-type: none"> Primary requirement is access to Microsoft Office suite of products and a few specialized applications and databases for research purposes 	<ul style="list-style-type: none"> Based in each location 	1000

User Group	Responsibilities	Application Requirements and Comments	Location	User Count
Emergency Response Team	<ul style="list-style-type: none"> Plan for emergencies and coordinate emergency response activities 	<ul style="list-style-type: none"> Users require access to specialized applications for emergency management. Critical resources are email, PositivelyPeople, PositivelyResponse, and Microsoft Word, Excel, and Access. 	<ul style="list-style-type: none"> Access is required from each site, an external nominated emergency control room and remotely through laptops/smartphones on a public wireless or mobile network. 	150
Contractors	<ul style="list-style-type: none"> Perform various short-term tasks, most commonly with the nursing team. Others, such as cafeteria workers, perform tasks that do not require computers. 	<ul style="list-style-type: none"> Requirements depend on assigned task; however, data security is the foremost concern. Those that do not require computers, do not need access to desktops or applications, just kiosk devices to clock in and out. 	<ul style="list-style-type: none"> Most commonly but not always based out of each site 	650
Call Center	<ul style="list-style-type: none"> Perform various tasks for departments such as call logging and scheduling 	<ul style="list-style-type: none"> Users currently require access to the legacy mainframe but are being migrated to Windows-based solution. 	<ul style="list-style-type: none"> Based out of each site 	200

Application Access

With the exception of Call Center users, all users currently access their required applications locally on their desktops or laptops. The recently conducted XenDesktop POC has increased interest in desktop virtualization. Members of the Management team who attended the demonstration are excited about the possibilities of having secure remote access to the corporate network, centralized management of applications, and a host of other features they like. The POC was successful and has gained the support of many of the decision makers at Soler Healthcare.

In the new environment, users in the HR, Doctors, Management, IT, the Emergency Response and Offsite Contractors groups should have remote access to their applications and/or desktops at all times including when at a Soler Healthcare facility or outside of one (over the Internet from other networks). All other users should have access to their applications and/or desktops only from the internal network. Access to email in particular should be available to all users regardless of their location (internally and externally).

Virtualized Desktops

Soler Healthcare is new to the concept of desktop visualization and has recently begun to explore the possibility of visualization applications, desktops, and server workloads. Soler Healthcare plans to move to a virtualized desktop and application model for users based on what is deemed most appropriate following the successful POC of XenDesktop in their environment. On Soler Healthcare's desktops and applications visualization wish list, management would also like for the IT team to implement high availability within the desktop and application solution.

Databases

SQL Server 2008 is currently implemented in the Soler Healthcare environment. A team of database administrators maintains the SQL database infrastructure. A full backup is performed on a nightly basis as part of the regular maintenance program. All databases are currently stored on a storage area network (SAN).

The backend database for the PositivelyPeople, PositivelyFinance and PositivelyResponse applications are also housed on this SQL Server 2008. Soler Healthcare is moving all databases to

SQL Server 2008 R2 with the most recent service pack and patches based on robust new hardware and virtualized servers. The PositivelyFinance database needs to be transitioned to this new platform as soon as reasonably possible.

Windows Server and Active Directory

The Soler Healthcare server infrastructure is based on Windows 2008 R2 servers. Windows 2012 has been tested successfully for all applications, and Windows Server 2012 will be implemented as the server operating system platform in new virtual environment. The environment consists of a single forest which contains several domains, one for each country in which Soler Healthcare operates and maintains a facility. Each of these domains includes all of Soler Healthcare facilities in that country.

A Remote Desktop Services (RDS) License Server is hosted on a single domain controller within each domain, with 100 Client Access Licenses (CALs) on each RDS license server.

The IT staff at Soler Healthcare built all of the servers and desktops in the current environment using a manual build process. Servers at Soler Healthcare have been in service for three years with no significant changes, so the process of building or rebuilding a server has not been a regular part of maintenance tasks. However the CIO is requiring an automated, easy-to-use server provisioning process be incorporated as part of the new IT infrastructure.

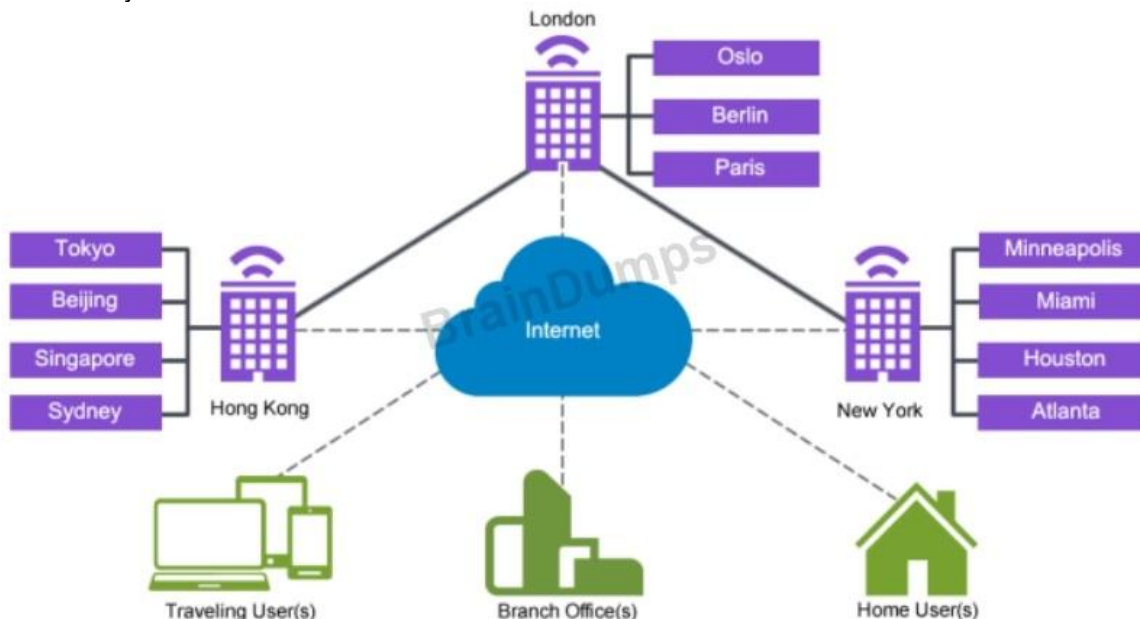
Logon scripts are not enabled for users as Soler Healthcare abandoned logon scripts last year in favor of Group Policy Objects.

Soler Healthcare applies a minimal set of Group Policy Objects (GPOs) to domain-joined servers and workstations. Only one GPO, which configures Internet Explorer and Windows Update settings, is applied to domain-joined servers and workstations.

Roaming profiles were implemented previously, but they caused issues with one of the PositivelyFinance modules. Instead, local profiles are being used and administrators must manually delete the profiles when necessary. No Remote Desktop Services-specific home drives have been implemented, as they have been deemed unnecessary.

Network Architecture

The site layout of Soler Healthcare:



Site Layout

Soler Healthcare is a worldwide organization comprised of three data centers in New York, London, and Hong Kong with numerous regional hospitals connected by a private wide area network to their local datacenter. Additionally, users work from home and on the road. Approximately 20% of all users work from home offices or travel part of the time. This is likely to increase significantly due to a new flexible working policy for administrative and managerial users. Because of this, reliability of

remote access will be very important. The CIO has emphasized that internal WAN traffic between sites must be kept to a minimum. As such, each user has a "home" datacenter, to which he or she primarily connects; if there is a failure, virtualized desktops and applications should fail over to the secondary datacenter. Based on this architecture, the datacenters are designed to support specific regions.

Data Center	Data Center Connections	Primary Region	Secondary Data center
New York	2 (London, Hong Kong)	Americas-East	London
London	2 (New York, Hong Kong)	European datacenter	New York
Hong Kong	2 (New York, London)	Asia-Pacific datacenter	London

Enterprise Storage

User data is currently stored on an aging iSCSI SAN. Soler Healthcare plans to roll out a new global storage solution for the three main datacenters, and the new storage solution will provide a total capacity of more than 1PB. Components of the solution will be physically located at the three datacenters. Initially, only about 200TB of space will be used at each data center, and an administrative project to delete obsolete and old files has been started.

Soler Healthcare plans to upgrade its storage solution in order to incorporate redundancy, high availability, and replication between the primary and backup datacenters, for each site.

Server Hardware

Characteristics of all physical servers associated with the Soler Healthcare environment.

Component	Specification
Number of Processors	2
Processor Type	Intel Xeon 64-bit compatible
Processor Speed	1.5.0Ghz
Memory (GB)	4GB
Disk Capacity	5x36GB
Drive Interface Type	SCSI
RAID	RAID 5 with Hot Spare
Maximum NIC Speed	1000Mb/Full (set to Auto Duplex)
Management Software	IBM Director

Soler Healthcare is planning to purchase new hardware to support the planned virtualization environment. This capital expenditure has received preliminary budgeting approval; however, where feasible and reasonable, server virtualization should be incorporated in order to maximize the efficiency of datacenter operations.

Security

Active Directory is used to authenticate users in the Soler Healthcare environment. Due to the sensitive nature of the PositivelyFinance application, shadowing of this application should be prohibited. Shadowing of all other applications and desktops in the environment should only be allowed by Level-3 support personnel. Anti-virus software is installed on each server and

workstation, and it is automatically updated every hour. In the future, the company will require two-factor authentication when accessing the environment remotely.

Disaster Recovery

The mobile workforce is not incorporated into the disaster recovery plan at present. As such, the mobile workforce must be included in any disaster recovery plan. The CIO has confirmed the use of the London datacenter for disaster recovery purposes.

QUESTION 193

Based on the assessment of the current company infrastructure, which design option is best for remote access?

- A. Deploy six NetScaler appliances: two in New York, two in Hong Kong, and two in London.
- B. Deploy three NetScaler appliances: one in each datacenter.
- C. Deploy two NetScaler appliances: one in London and one in New York.
- D. Deploy one pair of NetScaler appliances in the London failover datacenter.

Answer: B

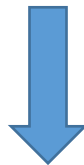
QUESTION 194

How can the architect implement high availability?

- A. Configure three high-availability pairs: one pair in New York, one pair in London, and one pair in Hong Kong.
- B. Configure three high-availability pairs: one pair between New York and London, one pair between New York and Hong Kong, and one pair between Hong Kong and London.
- C. Configure two high-availability pairs: one pair for New York and London, and one pair for London and Hong Kong.
- D. Configure one cluster instance containing all six appliances.

Answer:

Get Complete Version Exam 1Y0-401 Dumps with VCE and PDF Here



<https://www.passleader.com/1y0-401.html>